

the wave of the future...

by McCoy L. Moretz, MD, FACS

Facial aging is multifactorial. We have no control over what is arguably the most important factor: our genetic structure. Given to us by our birth parents, it is not changeable. Additional factors that effect aging are:

DIETARY including alcohol & tobacco consumption

ENVIRONMENTAL UV exposure, the lack of sun screen use, wind and its drying effects, low humidity, and air pollution levels

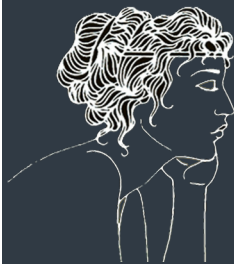
MEDICAL conditions such as diabetes, scleroderma/collagen vascular diseases, chronic stress and fatigue, and hormonal changes

AGING occurs primarily by gravitational descent and soft tissue wasting (Deflation). These effect the skin and supporting structures of the face and neck. Gravity produces a continual downward force resulting in lengthening the deep muscular network (SMAS) attached to the facial skeleton. The skin is a dynamic and continually renewing organ. It grows to cover the underlying stretching SMAS. Deflation affects all the soft tissue structures of the face and the skin, fat pads, and dermis thin. The resulting lack of support for the epidermis creates new lines, wrinkles, and skin folds, all signs of aging.

To counteract aging, numerous lifting techniques have been designed. Aged skin, although better draped on the surface of the SMAS, is still thin, poorly toned with a sal-



Dr. Moretz performs procedures in Beverly Hills, California in association with Summit Surgical Center, local hospitals, and his private practice, Facial Aesthetic Cosmetic Engineering of Beverly Hills.



F.A.C.E. of Beverly Hills
Facial Aesthetic Cosmetic Engineering

low appearance. It is dull and lacks a youthful glow. The fine crepe-like wrinkles are unchanged. No significant new collagen stimulation occurs from surgical lifting.

External beam lasers and chemical peels superficially treat the skin. The Dermis is THE source of skin cushioning and support. In simplistic terms the dermis is "where the action is". A problem is that too much epidermal absorption of energy can cause permanent damage; scar tissue and color change.

We now have a safe and dependable laser system for the delivery of laser energy under the skin without a scalpel or sutures.

Only a small skin prick is necessary

for the laser to be introduced. The negative effects of surface skin laser delivery are eliminated and the full amount of energy is directed to the ideal location for skin replenishment, the dermis, and skin support is maximized. Two techniques, 'SmartLook' Skin Refreshing and the 'SmartM.A.C.' Couture Lift have been created, taking advantage of the new technology.

The safe delivery of laser thermal energy under the skin is a major technological

advance. This results in improved facial skin tone and elasticity combined with skin tightening, a revolution in our field.

There are no negative effects on skin pigmentation. Areas of melasma, sun induced pigmentation, and rosacea are visibly improved in most cases. Bruising is generally mild, as is pain.

Observed changes in the skin are reduction in pore size, improved skin light reflection resulting in a more youthful glow, and improved skin tone and elasticity, which provide a gentle lifting effect on treatment zones, whether surgical lifting was performed or not.

Skin improvement occurs as early as 2 weeks and continues for 3 to 5 months. Results will be affected by the same aging factors that were present at the time of procedure, and the procedure is repeatable with no adverse effects. Additional benefits are obtained with the addition of adipose (fat) transfers and a platelet healing factor infusion.

With demand for maximum cosmetic results with minimally invasive procedures and rapid recovery time, this laser application will have a central place in my practice of aesthetic plastic surgery.



BEFORE



AFTER



BEFORE



AFTER



BEFORE



AFTER

'SmartLook' Skin Refreshing 'Smart M.A.C.' Couture Lift